

Alexander Porter

C. 174-36

N 88 1/2 E 155

Post

Elias Lee

George Atwell

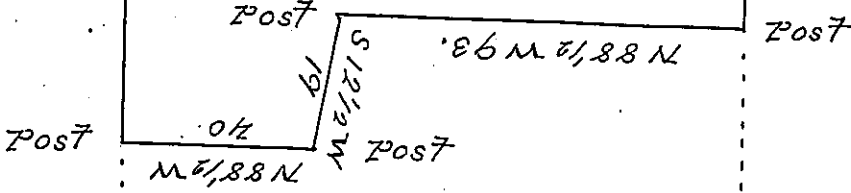
147 as 15 ps

& Allowance

Dixon Atwell

C. 3. 272

James Kimes



James Atwell

Draft of a tract of land situated in Marion Twp. Butler County on the Waters of Slipperyrock Creek surveyed at the instance of George Atwell containing 147 as 15 ps & the usual allowance of Six per Cent Sur. August 26th 1867 in pursuance of the actual settlement & improvement of George Atwell

W.D. McCandless
County Sur.

Hon. James P. Barr
Sur. Gen. Pa.

IN TESTIMONY that the above is a copy of the original remaining on file in the Department of Internal Affairs of Pennsylvania, made conformably to an Act of Assembly approved the 16th day of February, 1833, I have hereunto set my Hand and caused the Seal of said Department to be affixed at Harrisburg, this Third day of November 1903.

James P. Barr
Secretary of Internal Affairs.